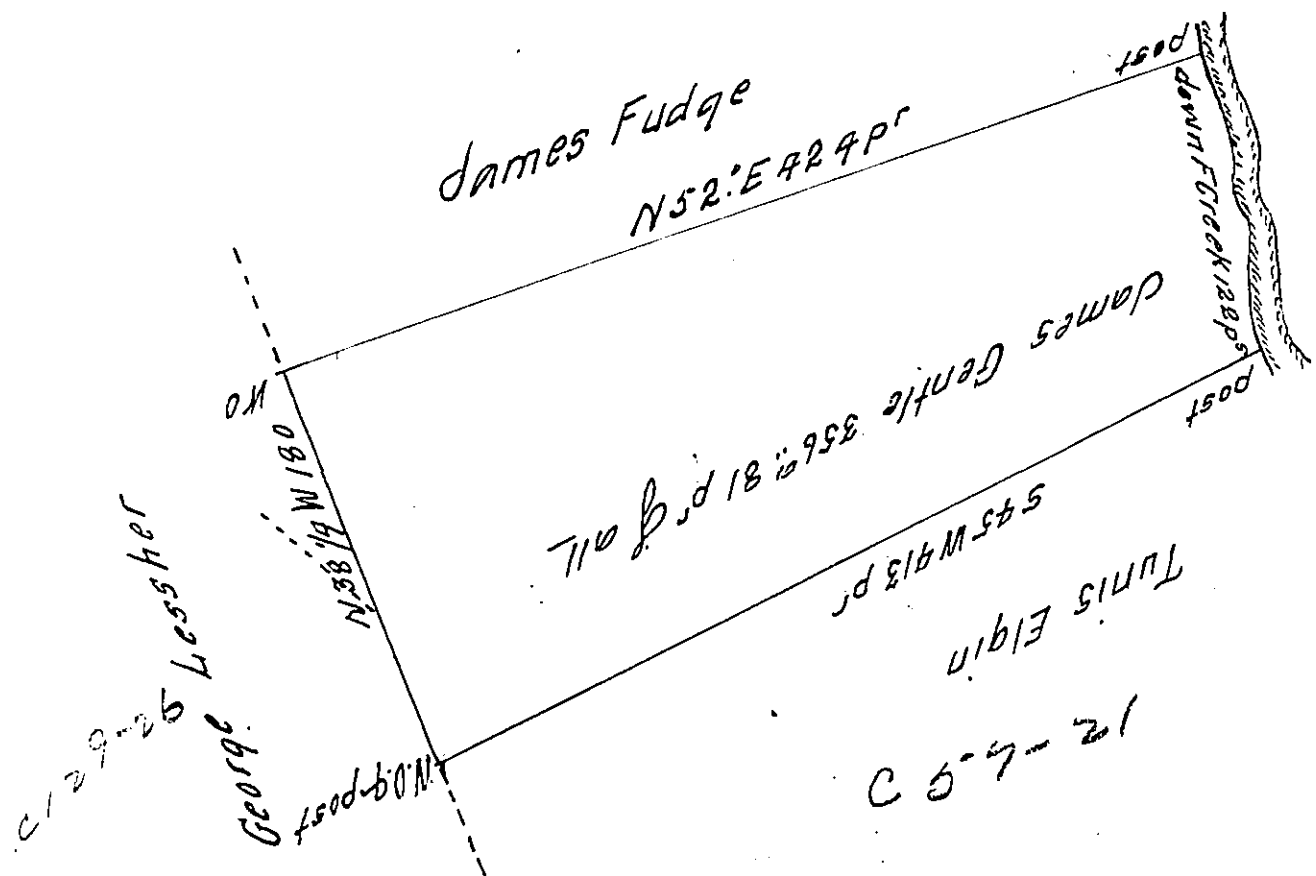


River Courses beg^d
 Post 536° E 25
 525° E 24
 531° E 32
 539° E 41 Post
 122 P^r



Situate on the West side of French Creek in Allegheny County
 Containing 356^{sq} and 81 P^r and Allowance of Six & Cent for
 Roads for Surveyed the 9th day of November 1794 In pursua-
 nce of a Warrant dated the 13th day of April 1792

To Daniel Brodhead Esq^r
 Surveyor General.

With Power D.Y.S^r

[Handwritten signature]

IN TESTIMONY that the above is a copy of the original remaining on file in
 the Department of Internal Affairs of Pennsylvania, made
 conformably to an Act of Assembly approved the 16th day of
 February, 1833, I have hereunto set my Hand and caused
 the Seal of said Department to be affixed at Harrisburg,
 this Sixth day of May 1912

[Handwritten signature: Henry Horck]
 Secretary of Internal Affairs.